

Term 4 Newsletter

Year 4A & 4B



General Information

Welcome to Year 4 2024!

Ms Cain and Miss Wu would like to welcome new and returning students to Walkerston State School for Year 4. In this newsletter, you will find our learning focuses for term 1 and our timetable for specialist lessons. If you have any queries or concerns, please don't hesitate to get in contact via email or stop into the classroom before or after school hours.

Ms Cain (4A) – tncai0@eq.edu.au

Miss Wu (4B) - jwu102@eq.edu.au

This term's specialist schedule is as follows:

Monday: Library (4AB), Music (4A) Religion (4AB) HPE (4B)

Tuesday -Instrumental (4AB)

Wednesday -HPE (4A)

Thursday- Music (4B)

Homework will be sent home on **Monday's and due back on Friday**. Students are also strongly encouraged to read for 15 minutes a day at home.

Your child will be contributing to a **safe and respectful classroom environment** by acknowledging the positive behaviour of others and celebrating their own positive role model qualities.

Diaries are expected to come back to school every day for communication and activities.

English

In this unit, students will write an information report that compares and contrasts Australia, and Asia's cultures, traditions, and government (rules and laws). This will seamlessly tie in with their HASS unit where students will be assessed on their ability to apply spelling/ word knowledge to spell multi-syllabic words, use a range of sentence structures, write in PEEL paragraphs, and utilise accurate punctuation and grammar.

Reading: This term, students will be assessed on their ability to analyse the Asian traditional story, 'Certainly'. Students will be assessed on their ability to identify and describe language features, comprehend literal and inferred meaning, discuss author's choice, and voice an opinion of story utilising evidence from the text.

Spelling: Your child will be focusing on phonological spelling strategies that look at breaking multi-syllabic words by sound and sound rules. Students will also be looking at etymological (word origin), morphology (prefixes, suffixes and base words), and how they influence meanings.

Maths

Throughout the term, students will solve and write problems using a range of strategies to build on mathematical concepts from previous years. Multiplication will be a key focus this term, along with exploring fractions and decimal places through purchasing problems, and data collection. Finally, students will develop their abilities to

Term 4 Newsletter

Year 4A & 4B



identify and represent symmetry observed in objects or nature. Students will have 3 Maths assessments this term, including:

- Representing tenths as a fraction and a decimal
- Identifying symmetry and using grid references
- Using surveys to conduct statistical investigations

HASS

Throughout the HASS unit your child will investigate the Asia regions, significant influence globally and in Australia while developing their knowledge, skills, capabilities and attitudes to effectively navigate and contribute to our regional neighbourhood. Asia is our part of the world, therefore knowing and understanding the growing engagement with Asia is foundational for young people as Australia seeks to strengthen its ties in the Asia region. The assessment will require year 4's to research an Asian country, and write an information report that demonstrates their ability to compare and contrast Australian rules and laws, local government, community, and finally the contributions that it has made towards Australia.

Science

In Science, your child will be identifying key processes in the water cycle and describing the how and why of water cycles in an environment. Students will explain the role of data in a science inquiry where they pose questions, identify patterns and relationships, and make predictions

based on observations. They will use simple procedures to collect rainfall throughout January and February using formal measurements (mm). Students will then review the patterns and relationships, compare the data from previous years, and draw conclusions using scientific vocabulary where appropriate.

The Arts

In this unit, students will analyse how Indigenous and other cultural artworks have represented landscapes that give them a sense of belonging. Students will also develop skills that help create deeper meaning/purpose in artworks including framing, shading and colour. Students will create three artworks that demonstrates their place of belonging as part of their assessment.

Design

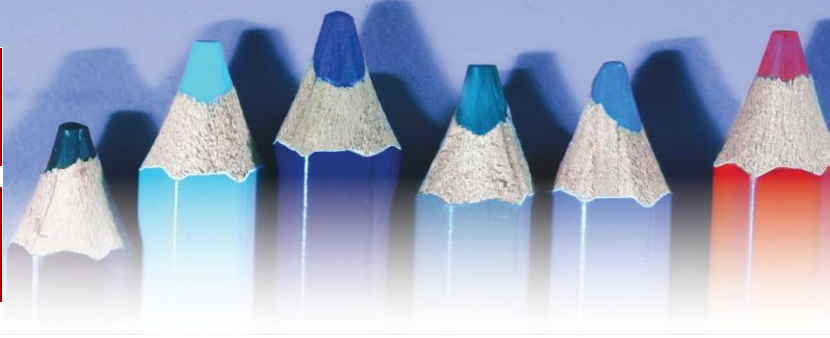
While this unit is not formally assessed students will view varying occupations relevant with design technology in local areas (technology and society), and demonstrate and identify how design meets the need for the community, environment and sustainability around the world.

Music & Dance

This term students will be exploring how folktales are performed in music and drama. They will be making connections with Balinese shadow puppets and analyse how the performance uses the elements of drama and music. Students will continue to develop

Term 4 Newsletter

Year 4A & 4B



their musical skills by learning a piece of music using recorder, voice and ukulele.

Health and Physical Education

This term students will demonstrate how movement concepts, strategies and skills can be adapted to perform in a range of adjusted team games such as walking netball, dribble tag, touch football and bowling. Students will be expected to demonstrate fair play, apply rules to promote inclusion and encourage others to play as a team in a range of movement games. Throughout their participation in team games as part of the Health unit, students will learn how to recognise and acknowledge the success and enjoyment of others during team games. Students will display their understanding by creating a power point slide, detailing the success of a peer to include in a class book. Term 1 brings with it warmer weather therefore it is important for all students to bring a hat and water bottle to PE to ensure they can stay sun safe and hydrated.