

# Term 2 Newsletter

## Year 4A & 4B



### General Information

Welcome to another term of Year 4!

Ms Cain and Miss Wu would like to welcome our year 4 students again, for another wonderful term of learning. In this newsletter, you will find our learning focuses for term 2 and our timetable for specialist lessons. If you have any queries or concerns, please don't hesitate to get in contact via email or stop into the classroom before or after school hours.

Ms Cain (4A) – [tncai0@eq.edu.au](mailto:tncai0@eq.edu.au)

Miss Wu (4B) - [jwu102@eq.edu.au](mailto:jwu102@eq.edu.au)

### This term's specialist schedule is as follows:

#### 4A & 4B

Library	Monday
Religion	Monday
PE	Wednesday
Music/Drama	Thursday

Homework will be sent home on **Monday's and due back on Friday**. Students are also strongly encouraged to read for 15 minutes a day at home. Your child will be contributing to a **safe and respectful classroom environment** by acknowledging the positive behaviour of others and celebrating their own positive role model qualities.

**Diaries** are expected to come back to school every day for communication and activities.

### English

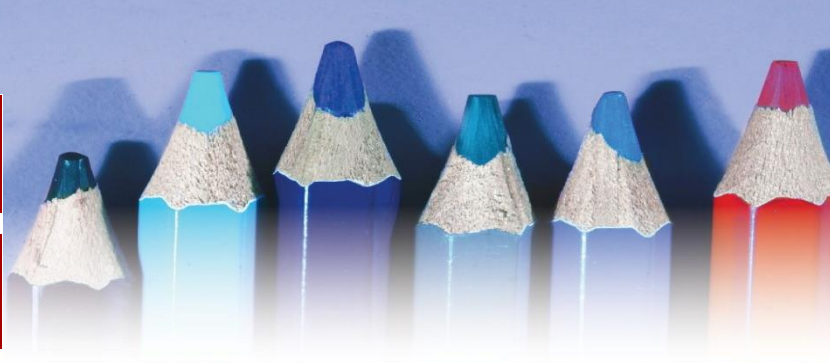
**Writing:** Students will write a persuasive text about 'Saving Bees'. Students will be assessed on their ability to create written multimodal texts for persuasive purposes and audience. Students will develop ideas using details from learnt topics/texts (links with Science and HASS). Students will write using PEEL paragraphs to organise and link ideas, incorporate language features including complex sentences, topic-specific vocabulary and literary devices, and/or visual features.

**Reading:** Students will read, view and comprehend an informative text about the water cycle. Students will describe the characteristic features of an informative text structure, and describe how language features and visual features shape meaning in an informative text. (Class novel: Nim's Island)

**Spelling:** This term, students will be focusing on phonological spelling strategies that look at breaking multi-syllabic words by sound and sound rules. Students will also be looking at etymology (the derivation of a word) and morphology (meaningful parts – the structure of a word), and how they have influenced word meanings.

# Term 2 Newsletter

## Year 4A & 4B



### Maths

Throughout the term, students will learn about the properties of odd and even numbers, and use it as a strategy to calculate estimations. Students also put a focus on rounding, to help support estimations for problem-solving. Students will also utilise their understanding of time and duration by using, calculating and converting: hours, minutes, and seconds.

### HASS

Biomes are naturally occurring environments around the world and contribute to the ongoing survival of animals and humans. Recognising the importance of sustainably managing how renewable and non-renewable elements of each environment are used, will enable students to make positive future decisions on how to protect our natural environments and resources. In this unit students will research a range of Australian biomes, identify and understand how they impact on our daily lives, describe the importance of maintaining healthy ecosystems and communicate how land management techniques support vegetation and water.

### Science

This term, students will research how the removal of a food source from within a habitat, such as through an insect or rodent infestation, affects other living organisms within that habitat. Using scientific vocabulary, students will draw, label and explain food chains, webs and the importance of organisms in sustaining healthy environments such as the roles and interactions of consumers, producers and decomposers within a habitat.

### Digital Technology

In this unit, students will explore, manipulate and transform data for our school lunch rubbish system. They will create a digital solution that presents data as meaningful information to understand.

### Music/Drama

In Drama this term students will reflect on live and recorded drama performances examining what the purpose of the drama is and formulating opinions on why they think people from diverse cultures create dramas for similar purposes.

In Music this term students will perform the song My Paddle arranged for a small ensemble featuring melody and accompaniment parts .

# Term 2 Newsletter

## Year 4A & 4B



### Health and Physical Education

This term, students will be learning how to apply fundamental movements skills, demonstrate movement concepts and adapt strategies to athletic skills, to perform running, jumping and throwing sequences in authentic situations for an Athletics Carnival. It is fundamental for students to wear a hat and bring a water bottle to PE to ensure they can stay sun safe, hydrated and in the learning space at all times.

As part of the Health unit, students will be learning to develop an understanding of how to describe and apply protective behaviours and help-seeking behaviours in real-world scenarios. Students will take on different roles such as the person in need of help, the bystander and the helper in role plays. Those students who do demonstrate positive participation for the entire hour of HPE will be invited to play in the 'BONZA behaviour' zone on their designated day each week as a reward for their efforts.